

Specifically suited for loading and unloading lorries. Consolidated solution with repetitive references such as Danieli, Tenaris Group, Duferco and Riva Group.

More than 70 magnetic systems sold since 1996 for billet layers up to 30 tons.

Absolute safety

- The lifting force of the Electro-permanent magnets is independent from external energy sources = no accidental drops of the load as a result of power failure or cable interruption.
- The lifting force of the electro-permanent magnet is constant in time = no accidental drops of the load as a result of a reduction in magnet lifting force.

- No need for operator to get in contact with or stay by the billets. Magnet system can be operated from a safe distance using radio control or the control system. No need for slings and clamps.
- Technology of the electro-permanent magnet controllers facilitates the creation of safety redundancy.



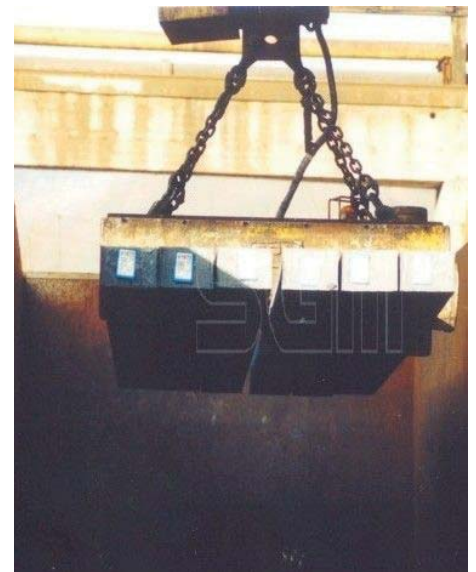
- Special recommendation for the use of electro-permanent magnets is made for locations where sudden interruptions of main electrical power may happen inadvertently.



Productivity



- Just a few seconds are necessary to grip and release a layer of billets.
- Wooden spacers between layers of billets are no longer necessary.



User friendly

- Operation is typically through radio control.
- The electronic controllers for electro-permanent magnets are technologically less sophisticated than the ones for electro-magnets.

This, combined with the fact that unlike electro-magnets, electro-permanent magnets do not generate heat when energised, makes the electro-permanent magnet technology easier to maintain.
No need for battery back-up.

Notice

- Electro-permanent magnets can only apply to applications with limitations on billet temperatures.



Designed and manufactured according to European standards EN 13155.